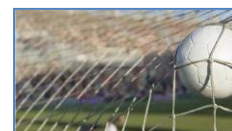


# SUMMER FOOTBALL 2011



## Premier Competition

The Premier competition is a competitive league for senior players wishing to maintain fitness levels while developing the football skills. All games are 7-a-side and played on approximately 40m x 60m fields providing greater involvement for all players and lots of goals. You can register a team or as an individual; players registering individually will be placed into a team. There is no limit to the number of players you can register in a team; however we recommend 10 as an ideal number.

## Rules

1. There is no offside, otherwise normal 'Laws of the Game' apply
2. Teams should wear a uniform shirt colour
3. All players must wear shin-guards
4. All fees must be paid prior to start of competition. Any team with unpaid fees will be withdrawn from the competition and money already paid forfeited.

## Playing Dates

2011 October 31<sup>st</sup>  
November 7<sup>th</sup>, 14<sup>th</sup>, 21<sup>st</sup>, 28<sup>th</sup>  
December 5<sup>th</sup>, 12<sup>th</sup>  
2012 January 23<sup>rd</sup>, 30<sup>th</sup>  
February 13<sup>th</sup>, 20<sup>th</sup>, 27<sup>th</sup>  
March 5<sup>th</sup>



## Registration

The registration fee is only \$40 per player and must be paid prior to the start of the competition. To register an individual or team, complete the Registration Form (available on the website) and send it to Southland Football, P O Box 1135 Invercargill.

Email entries to [admin@southlandfootball.org.nz](mailto:admin@southlandfootball.org.nz) will be accepted providing all details are supplied.

Entries close at 5pm on Friday 7<sup>th</sup> October 2011



P O Box 1135, 199 Islington Street, Invercargill

Phone: 03 217 7900

Email: [admin@southlandfootball.org.nz](mailto:admin@southlandfootball.org.nz)

Website: [www.southlandfootball.org.nz](http://www.southlandfootball.org.nz)

